



A Program of Commonwealth Medicine
UMASS Medical School

Long Term Outcomes for Intensive Wraparound vs. a One-Time Summer Wraparound Process


W. Peter Metz, MD
Toni DuBrino, MA

J. Anthony Irsfeld, Ph.D.
Melodie Wenz-Gross, Ph.D.
Andrew White, MA

Worcester Communities of Care Evaluation Team

W. Peter Metz, MD
Toni DuBrino, MA
Melodie Wenz-Gross, Ph.D.
J. Anthony Irsfeld, Ph.D.
Linda Foss, MPH, SM
Stephen O'Neill, BA
Andrew White, Ph.D.
Cindy Nicholls, LICSW
Betsy Hinden, Ph.D.
Benjamin Chokshi-Fox, BA
Corinne Leifer, BA
Laura Speltz, BA



A Program of Commonwealth Medicine
UMASS Medical School

Strengths of Study Design

- Data collected by independent evaluators, not involved in service provision
- Firewall between identifying data and service providers
- Acceptable retention rates (73-82% for up to three years of follow-up)
- Inclusion of a well-matched comparison group

Study Sample

```

graph TD
    A["Overall Cohort (n = 110)  
[including 3 who did not enroll in the evaluation]"] --> B["Pilot* (n=51)"]
    A --> C["Comparison** (n=59)"]
    B --> D["Retention rate: 73%"]
    C --> E["Retention rate: 82%"]
  
```

All youth are between 5 and 18 years of age, live in Worcester, and have serious emotional disturbance, with a high risk of out-of-home placement

*Pilot youth participated in an intensive long-term wraparound process.
**Comparison youth participated in a brief wraparound process (summer intervention only). Our thanks to the Worcester Public Schools for their assistance in identifying and referring these youth.

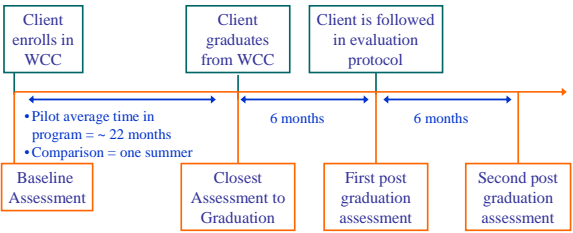
Demographic and Baseline Characteristics of Youth Enrolled in WCC: Intensive Wrap Cohort (n=48) and Comparison Cohort (n=49)

Variable *	Pilot youth	Comparison youth
Age at admission	10.5	10.8
% Male	87.5	77.6
% Caucasian	40.0	46.8
% African- American	20.0	12.8
% Bi/Multi Ethnic	17.8	12.8
% Other Ethnicity	22.2	27.7
% Hispanic	31.3	34.7
Baseline CAFAS	124.2	108.9
Family risk score	3.1	2.6
Child risk score	1.1	.7
BERS total score at baseline *	37.8	44.2
CBCL internalizing at baseline	68.8	66.3
CBCL externalizing at baseline	72.1	69.1
Total CBCL at baseline	73.8	70.4

* Only one variable, BERS total score at baseline, shows a statistically significant difference between Comparison youth and Pilot youth. No other differences were significant on baseline demographic or assessment variables, using a statistical significance level of $p < .05$.

Pilot and Comparison Design Analysis

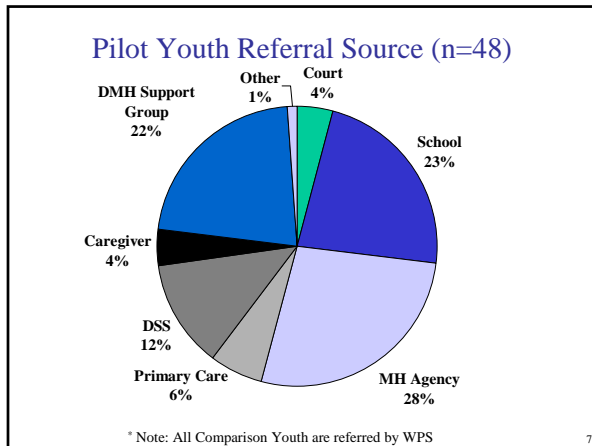
- Youth and parents involved in WCC complete research surveys every six months.
- For evaluation purposes, we will present these Time Points according to when the youth graduated from WCC.



Client enrolls in WCC → Client graduates from WCC → Client is followed in evaluation protocol

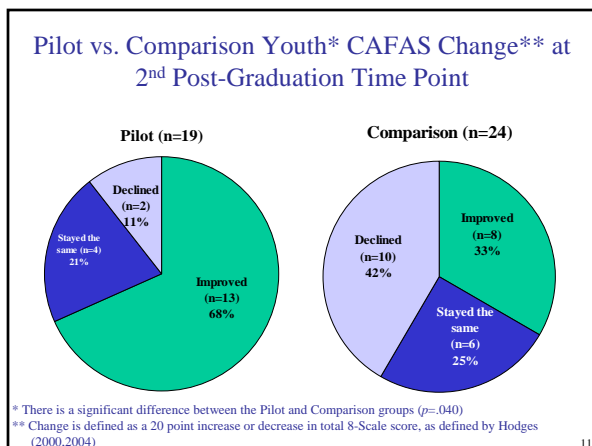
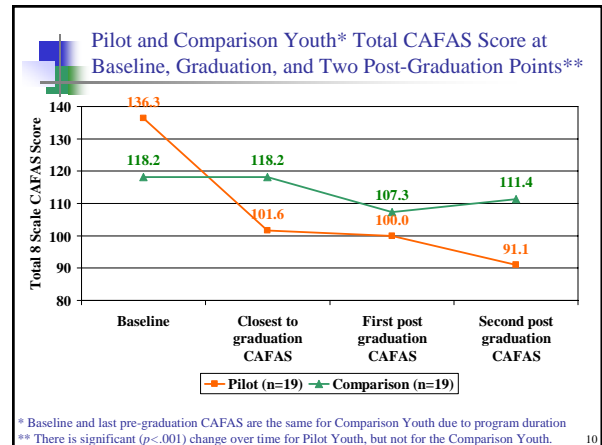
Timeline: Baseline Assessment (at enrollment), Closest Assessment to Graduation (at graduation), First post graduation assessment (6 months post-graduation), Second post graduation assessment (12 months post-graduation).

• Pilot average time in program = ~ 22 months
• Comparison = one summer

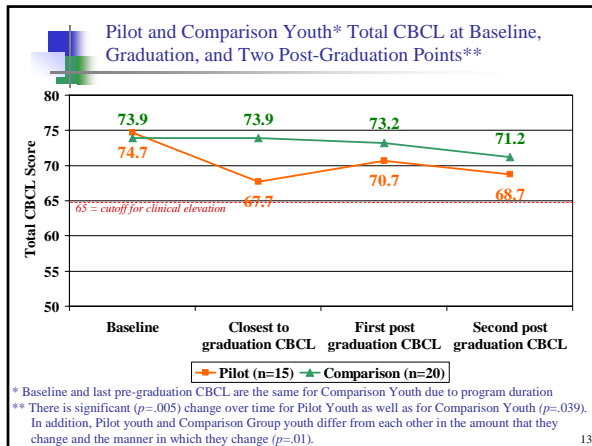


Child and Adolescent Functional Assessment Scale (CAFAS)

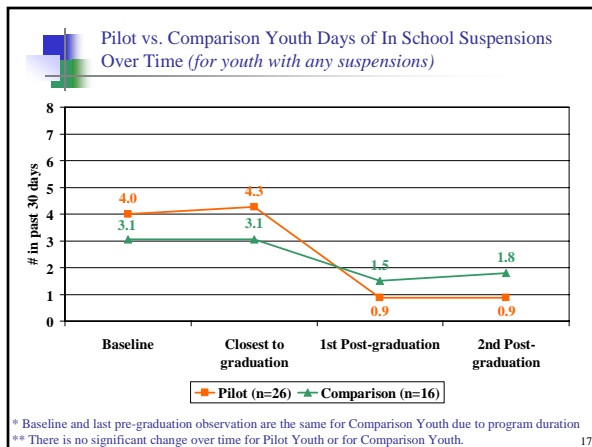
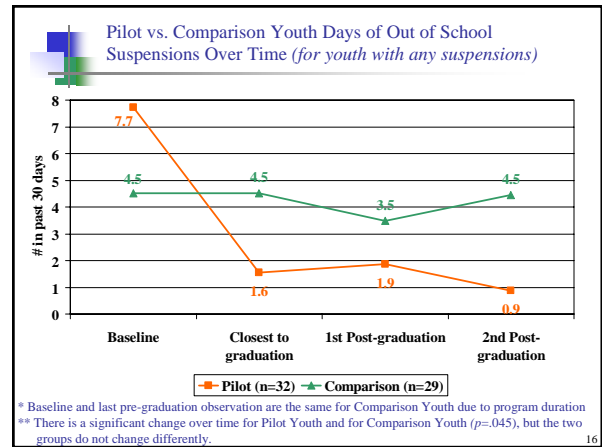
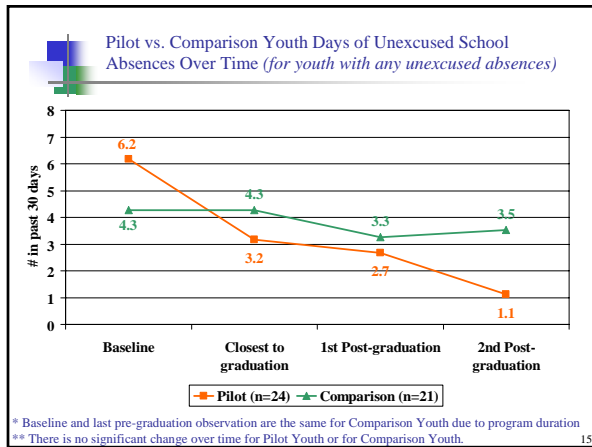
- ### Functional Outcomes
- Assessed with the Child and Adolescent Functional Assessment Scale (CAFAS)
 - Parent report of child functioning across eight domains/subscales:
 - School/Work
 - Home
 - Community
 - Behavior Towards Others
 - Moods/Emotions
 - Self-Harmful Behavior
 - Substance Use
 - Thinking
 - Subscales can be combined to create an overall functioning score



Child Behavior Checklist(CBCL)



Education Information



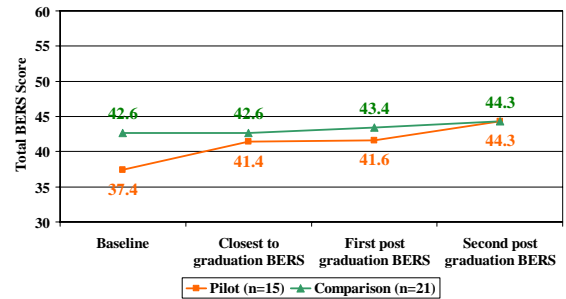
Behavioral and Emotional Rating Scale (BERS)

Behavioral and Emotional Strengths

- Assessed using the Behavioral and Emotional Rating Scale (BERS)
- Identifies the emotional and behavioral strengths of children across five domains:
 - Interpersonal strength
 - Family involvement
 - Intrapersonal strength
 - School functioning
 - Affective strength
- The BERS also provides an Overall Strengths Quotient

19

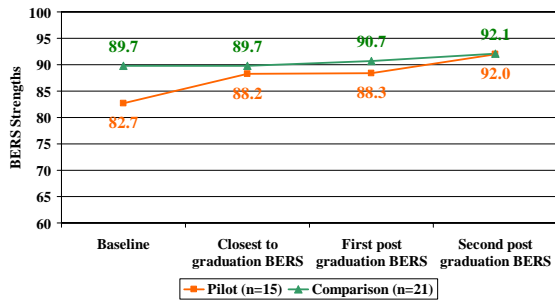
Pilot and Comparison Youth* Total BERS at Baseline, Pre-Graduation, and Two Post-Graduation Points**



* Baseline and last pre-graduation BERS are the same for Comparison Youth due to program duration
 ** There is no significant change over time for Pilot Youth or for Comparison Youth.

20

Pilot and Comparison Youth* BERS Strengths Quotient at Baseline, Pre-Graduation, and Two Post-Graduation Points**



* Baseline and last pre-graduation BERS are the same for Comparison Youth due to program duration
 ** There is no significant change over time for Pilot Youth or for Comparison Youth.

21

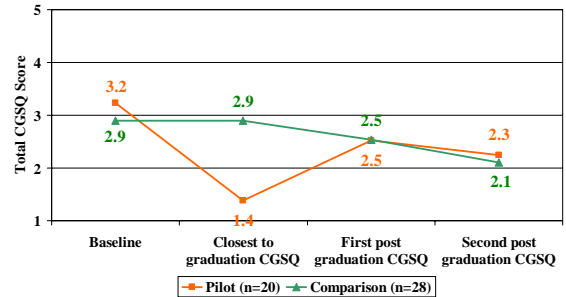
Caregiver Strain Questionnaire (CGSQ)

Caregiver Strain

- Assessed with the Caregiver Strain Questionnaire (CGSQ)
- Measures the extent to which caregivers are affected by the special demands associated with caring for a child with emotional and behavioral problems

23

Pilot and Comparison Youth* Total CGSQ at Baseline, Pre-Graduation, and Two Post-Graduation Points**



* Baseline and last pre-graduation CGSQ are the same for Comparison Youth due to program duration
 ** There is significant ($p < .001$) change over time for Pilot Youth, as well as for Comparison Youth ($p < .001$). In addition, the Pilot Youth and Comparison Youth differ from each other in the amount that they change and the manner in which they change ($p < .001$)

24